

COMPANY: SEMAPA

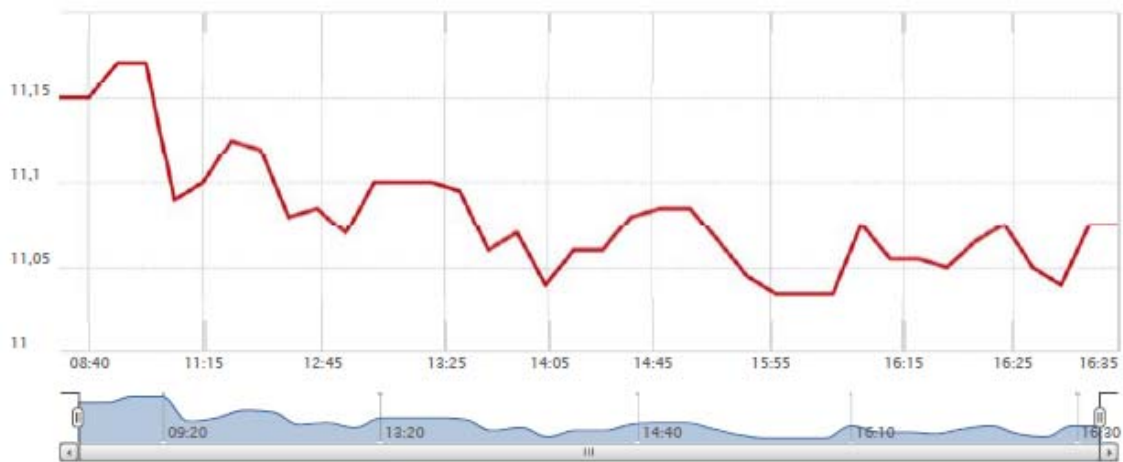
SEMAPA/PSI20

11.0750 Quotation	0.0150 Variation	0.14% Variation %	17,895 Number of shares	9.07% Annual variation
----------------------	---------------------	----------------------	----------------------------	---------------------------

16:35 (Quotations with 15-minute delay)

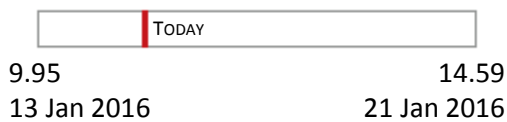
Company chart	Comparative chart	Interactive chart
---------------	-------------------	-------------------

Intraday	History
----------	---------

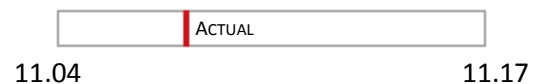


SUMMARY

52 week range



Intraday range



Previous close	11.0600	Max 52w	14.5900	PER	-
Open	11.1500	Number of shares	17,895	Dividend	-
Session minimum	11.0350	Number of shares 52w	22,096,851	Dividend Yield	-
Session maximum	11.1700	Capitalisation	904,224,167.23	Beta	0.81
Minimum 52w	9.9500	Profit this year	-	Volatility 30s	41.12

Technical analysis	Quantitative analysis	Risk analysis
--------------------	-----------------------	---------------

Volatility 30 sessions: 41.12% Volatility compared to market: 0% 100%

Beta 30 sessions 0.81 Beta compared to market: -2 4